

HEREDITARY CANCER RED FLAGS

Personal/family history Red Flags to identify individuals at increased risk for a hereditary cancer condition who would most likely benefit from referral to genetics

1

MULTIPLE (3 OR MORE) FAMILY MEMBERS WITH CANCER DIAGNOSES



CANCERS OCCURRING ON THE SAME SIDE OF FAMILY

maternal side OR paternal side



2

3

CANCER DIAGNOSIS AT A YOUNGER AGE THAN EXPECTED

e.g. colorectal cancer at/before age 40, breast cancer at/before age 45



SEVERAL AFFECTED GENERATIONS

This suggests an autosomal dominant pattern typical of most hereditary cancer conditions

4

5

CLUSTERING OF CERTAIN TYPES OF CANCERS IN THE FAMILY

e.g. breast and ovarian, colorectal and endometrial, melanoma and pancreatic



MULTIPLE PRIMARY CANCERS DIAGNOSED IN SAME INDIVIDUAL

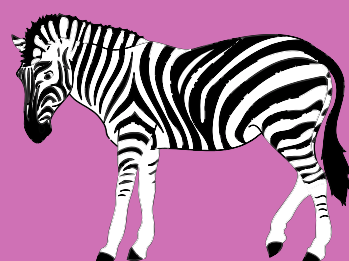
6



7

RARE/UNUSUAL CANCER DIAGNOSIS

e.g. male breast cancer



More hereditary cancer tools



Breast and ovarian



Colorectal/Lynch syndrome



Renal